



# Summer 2025

## PINECONE PRESS

### WASTE AND RECYCLING NEWSLETTER

Sponsored by Mountain Disposal for San Bernardino County Residents

#### Contact Information

**Burrtec Waste Industries**

##### Office Address

988 Waterman Canyon  
Crestline, CA 92325

##### Mailing Address

P.O. Box 3635  
Crestline, CA 92325

##### Customer Service

Phone (909) 338-2417  
Fax (909) 338-9759

##### Hours of Operation

Monday-Friday  
8:00 am to 5:00 pm

##### Website

Burrtec.com

Follow us on



**Bring your source  
separated green waste to  
any of our drop-off sites!**

#### GREENWASTE SORTING GUIDE

##### YES

- ✓ Dead plants
- ✓ Flowers
- ✓ Grass clippings
- ✓ Leaves
- ✓ Livestock manure
- ✓ Palm fronds
- ✓ Pine needles
- ✓ Prunings & twigs
- ✓ Shrub trimmings
- ✓ Small branches
- ✓ Untreated wood
- ✓ Weeds

##### NO

- ✗ Batteries
- ✗ Cactus
- ✗ Concrete
- ✗ Dirt
- ✗ Electronic waste
- ✗ Food waste
- ✗ Glass
- ✗ Household hazardous waste
- ✗ Liquids
- ✗ Pet waste
- ✗ Rocks
- ✗ Treated/painted wood

**\*\*All green waste brought must be contained in barrels/bags. Bundles of wood/branches can be no more than 4ft long and 2ft diameter.**

All sites require your most current trash bill for proof of service. For more information, please call our Customer Service Department.

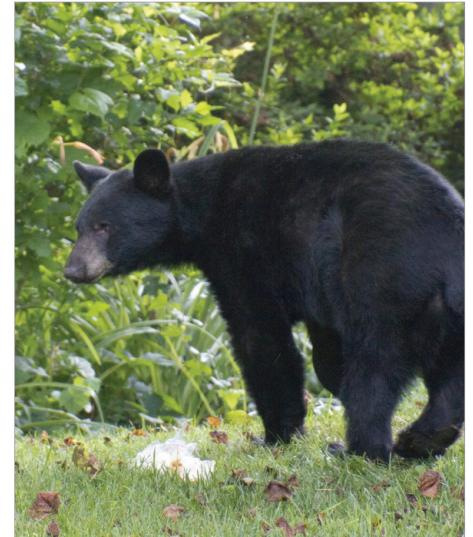
**Landscapers and third-party haulers are NOT allowed to use the drop off locations for any material types.**

You can also contact our Customer Service Department to have your green waste picked up for a fee.

#### Tips for Living With Bears

Bears are attracted to anything smelly or edible, especially garbage. Bears are also attracted to beehives, orchards and gardens. Consider these tips to help make your home "bearproof":

- Deodorize garbage container with bleach or ammonia.
- Separate food waste by keeping it in an airtight container. Use a garbage disposal whenever possible. Freeze meat bones or other smelly items until pick-up day.
- Be sure to keep barbecue grills clean.
- Pick up fallen tree fruit, and put away food sources at night, such as pet food and bird feeders.
- Close windows at night on accessible ground floors and decks.
- Don't leave food in or near a windowsill or on a counter near an open window.
- Securely block access to potential hibernation sites, such as crawl spaces under decks or buildings.



#### REMINDER: RECYCLE RIGHT!

#### YOUR BARREL GUIDE - WHAT GOES WHERE?

**Black Barrel** is for trash

**DO NOT ADD HAZARDOUS WASTE**

##### BLACK BARREL GUIDE

###### YES

- ✓ Cactus
- ✓ Clothing
- ✓ Diapers
- ✓ Dishware
- ✓ Flower pots
- ✓ Food waste
- ✓ Pizza boxes
- ✓ Plastic bags or wrap
- ✓ Pet food bags
- ✓ Pet waste
- ✓ Clothing
- ✓ Plastic toys
- ✓ Plastic utensils
- ✓ Shrink wrap
- ✓ Soiled paper products
- ✓ Straws
- ✓ Wipes

###### NO

- ✗ Batteries
- ✗ Electronic waste
- ✗ Hazardous waste
- ✗ Hot ashes
- ✗ Flammables
- ✗ Fluorescent bulbs
- ✗ Grass clippings branches
- ✗ Infectious waste
- ✗ Landscape waste
- ✗ Machinery
- ✗ Paint
- ✗ Pesticides
- ✗ Oil
- ✗ Recyclables
- ✗ Sharps
- ✗ Tires

**Blue Barrel** is for recyclables

**DO NOT BAG RECYCLABLES**

##### BLUE BARREL GUIDE

###### YES

- ✓ Aerosol cans (empty)
- ✓ Aluminum cans
- ✓ Brochures
- ✓ Cardboard
- ✓ Cartons
- ✓ Catalogs
- ✓ Computer paper
- ✓ Envelopes
- ✓ Glass bottles & jars
- ✓ Junk mail
- ✓ Newspaper
- ✓ Paper products
- ✓ #1 - #7 Plastics
- ✓ Styrofoam
- ✓ Tin cans
- ✓ Tissue boxes
- ✓ Wrapping paper

###### NO

- ✗ Batteries
- ✗ Bubble wrap
- ✗ Carpet
- ✗ Clothing
- ✗ Diapers
- ✗ Dishware
- ✗ Electronic waste
- ✗ Furniture
- ✗ Hoses
- ✗ Mirrors
- ✗ Pet food bags
- ✗ Pizza boxes
- ✗ Plastic bags or wrap
- ✗ Plastic toys
- ✗ Soiled paper products
- ✗ Stuffed animals
- ✗ Wax paper

#### Holiday Schedule

Please note that services are interrupted on the following holidays:

Memorial Day		Independence Day		Labor Day
Thanksgiving Day		Christmas Day		New Year's Day

*When the holiday falls on a weekday, collections for the remainder of the week will be delayed by one day. There is no service interruption or delay when the holiday falls on a Saturday or Sunday.*

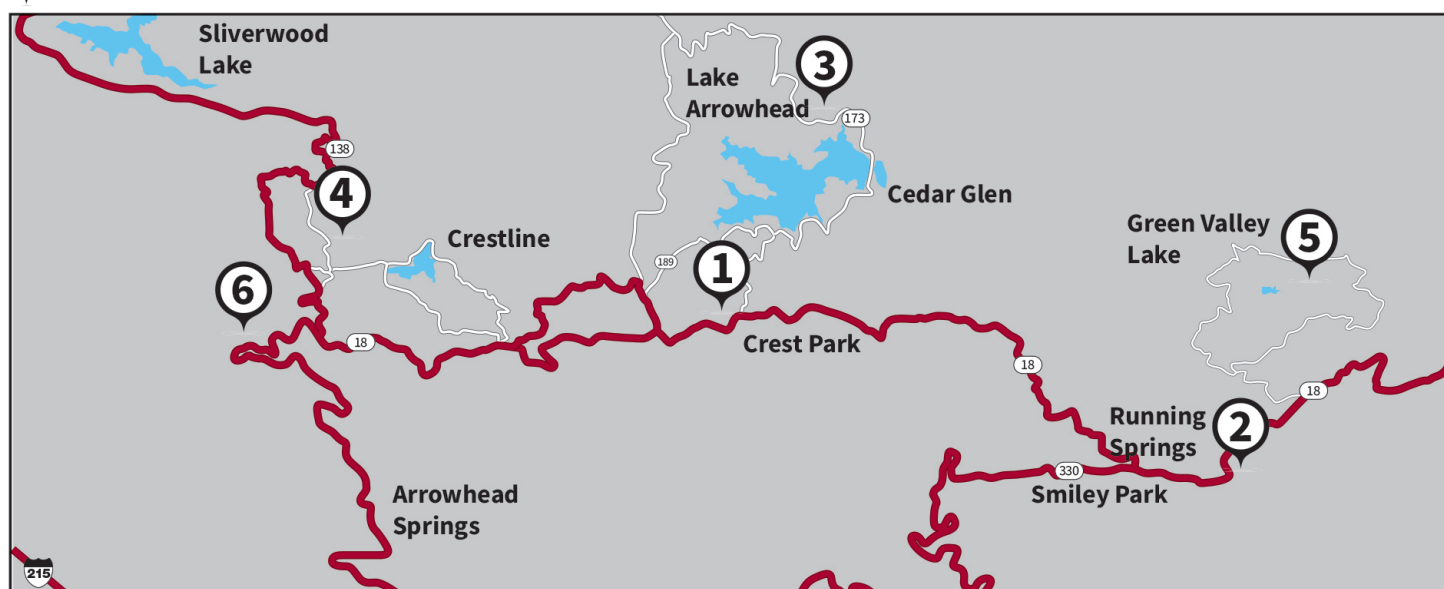
# CLEAN MOUNTAIN SITES DROP-OFF LOCATIONS FOR TRASH, RECYCLABLES AND GREEN WASTE

**ALL SITES REQUIRE YOUR MOST CURRENT TRASH BILL FOR PROOF OF SERVICE**

The Burrtec Clean Mountain Sites are for residential properties subscribed to curbside or clean mountain service. The sites are open every weekend with the exception of Burrtec recognized holidays and Easter Sunday. For more information, contact Mountain Disposal at (909) 338-2417, Monday through Friday, 8:00 AM to 5:00 PM.

**Clean Mountain Sites may close during periods of inclement weather or if unsafe/hazardous conditions exist for the public and staff.**

- ① **RIM OF THE WORLD HIGH SCHOOL** - 27400 Highway 18, Lake Arrowhead, CA 92352
- ② **CHARLES HOFFMAN ELEMENTARY SCHOOL** - 2851 Running Springs Road, Running Springs, CA 92382
- ③ **LAKE ARROWHEAD ELEMENTARY SCHOOL** - 1300 Golden Rule Lane, Lake Arrowhead, CA 92352
- ④ **VALLEY OF ENCHANTMENT ELEMENTARY SCHOOL** - 22836 Fir Lane, Crestline, CA 92325
- ⑤ **GREEN VALLEY LAKE RD/RIDGE WAY** - Green Valley Lake, CA 92341
- ⑥ **MOUNTAIN DISPOSAL OFFICE** - 988 Waterman Canyon Road, Crestline, CA 92325



## HOURS OF OPERATION

SATURDAY 8:00 AM TO 3:00 PM | SUNDAY 8:00 AM TO 3:00 PM

**FOR SITE 6 ONLY - MONDAY - FRIDAY 8:00 AM TO 5:00 PM, Must check in at the front counter**

## CLEAN MOUNTAIN SITES OPERATING GUIDELINES

- All residential household trash brought to the site must be in a 32-gallon trash container. Limit of 5 cans per property, per day.
- Green waste must be in a 32-gallon trash container or bagged.
- Tree branches and limbs brought to the site cannot exceed 4-feet in length and must be tied in bundles no bigger than 2-feet in diameter.
- Unlimited green waste is accepted, per single family generator, as long as it's contained.
- You may bring **two** bulky items per day; this includes E-Waste.
- Renters and vacationers are required to bring a copy of a current invoice. Please reach out to the property owner or management team for more information.
- **No trailer loads or loose materials will be taken. These items can be hauled off to Heaps Peak Transfer Station located at 29898 State Highway 18, Running Springs, CA 92382.**
- **Household Hazardous Waste (HHW) is not accepted. HHW consists of items such as paint, motor oil, paint thinner, turpentine, pesticides and herbicides. For information regarding the disposal of HHW, call 1-800-OILY CAT**
- **No construction material or tires are accepted at any of the sites.**
- **Landscapers and third-party haulers are NOT allowed to use the drop off locations for any material types.**