



Food Donation

Working together to end hunger

California produces nearly half of the nation's fruit and vegetables, yet 1 in 8 Californians struggle with food insecurity, or lack of access to food that one needs to live a healthy lifestyle.

Burrtec is committed to partnering with local jurisdictions and organizations to support a food rescue program within its existing Food Waste Recycling efforts to help divert edible food waste to local communities in need.

Contact Burrtec at (760) 340-2113 to schedule an assessment with a District Environmental Coordinator. We can assist your food establishment in participating with local food agencies to begin a food rescue program.



Food Donations in Your Community

Make a difference in your community by donating non-perishable and unspoiled perishable food items to food banks. Food donors come in all shapes and sizes, including supermarkets, restaurants, caterers, hotels, wholesalers, farmers and residents. Contact a local food bank or other food agencies to begin participating in a food rescue program today!

The Effects of Wasting Food

Environmental Impact

As food rots in a landfill, it emits methane, a greenhouse gas 28 to 36 times more potent than the carbon that comes out of passenger vehicles.

Food Insecurity

More than 54 million people in the United States are food insecure according to the 2020 Feeding America data, meaning they lack reliable access to a sufficient quantity of affordable, nutritious food.

Wasted Natural Resources

When we waste food, we waste the water, energy, and physical labor it took to produce, package, and ship the food. Also the fuel that was used to transport the food from one part of the country to another.

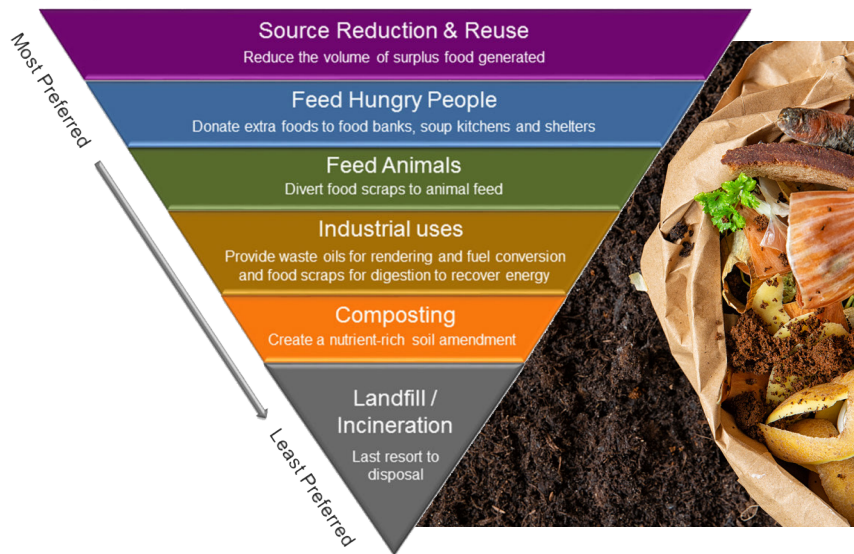
It's Coming!

SB 1383 (Short-Lived Climate Pollutants) Implementation

Statewide residential and commercial organics recycling collection and edible food recovery. For more information on this State Bill please visit www.calrecycle.ca.gov/organics/slcp



Food Recovery Hierarchy



The US EPA's Food Recovery Hierarchy prioritizes actions businesses and individuals can take to prevent and divert wasted food. For more information on food recovery go to:

www.epa.gov/recycle/donating-food

www.rivcoeh.org/OurServices/Foods/FoodDonations

